

GA12

AUGUSTA, GEORGIA

S/S of Wrightsboro Rd. Eastbound 1/3 Mile East of Horizon S Pkwy.



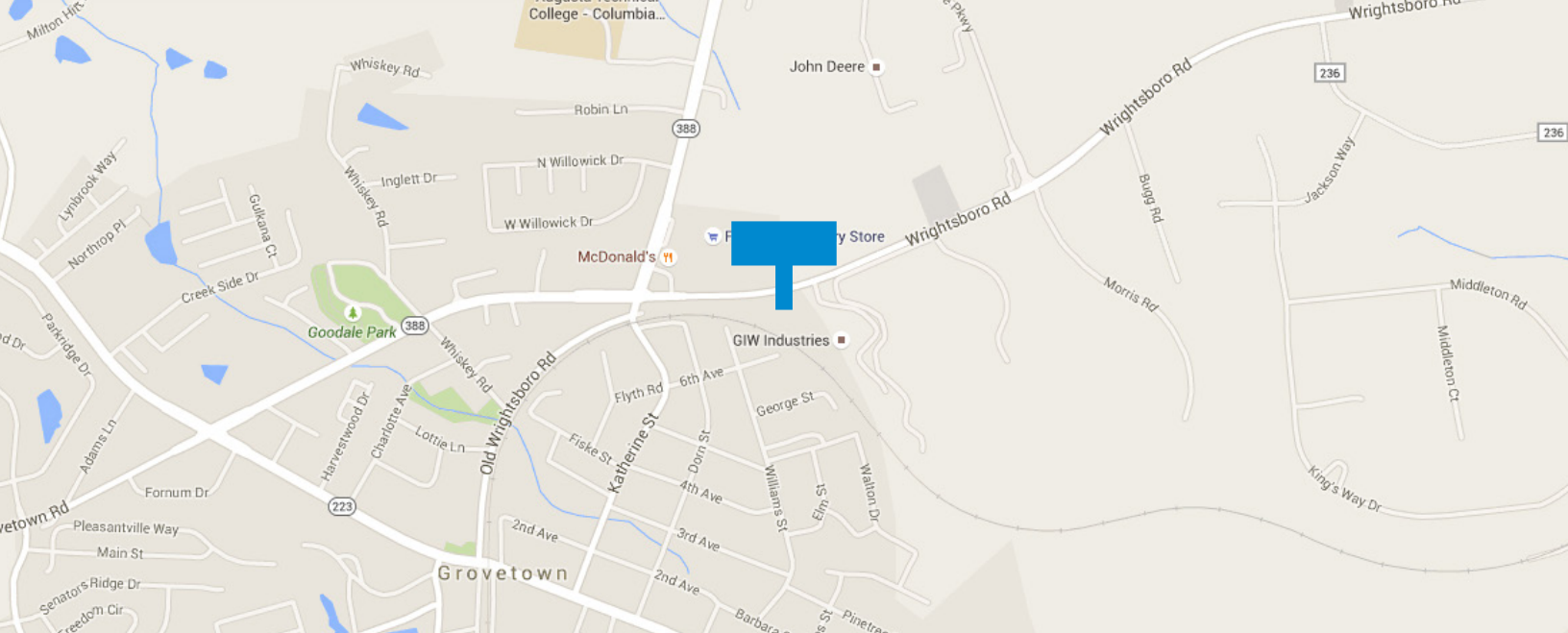
10'6" X 36' STATIC BILLBOARD

Lat. 33.457799, Long. -82.189348 • 11,100 DEC • 333,000 Monthly

Be Still
DISPLAYS

CHRIS WITHERS

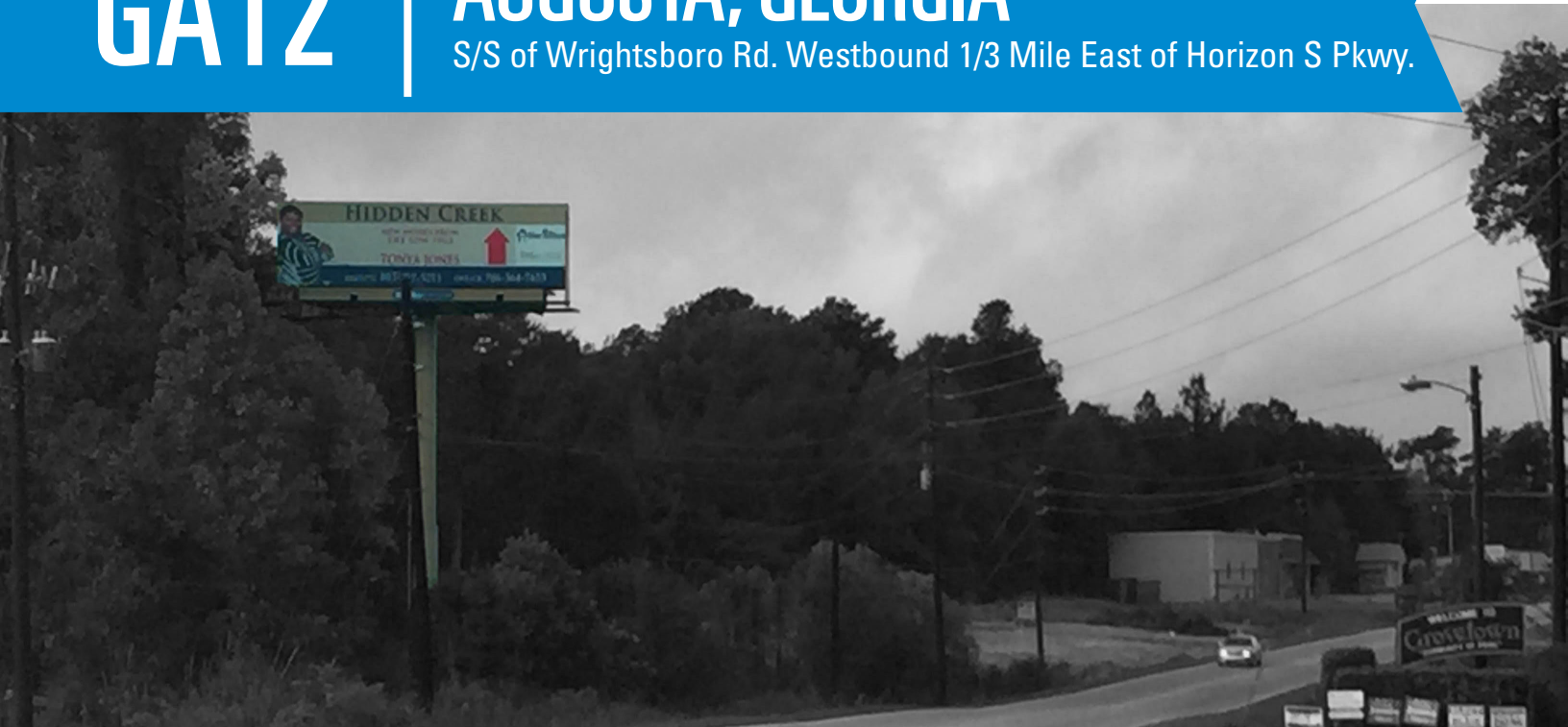
706-288-4616
wITHERS4@comcast.net
bestilldisplays.com



GA12

AUGUSTA, GEORGIA

S/S of Wrightsboro Rd. Westbound 1/3 Mile East of Horizon S Pkwy.



10'6" X 36' STATIC BILLBOARD

Lat. 33.457799, Long. -82.189348 • 11,100 DEC • 333,000 Monthly

Be Still
DISPLAYS

CHRIS WITHERS

706-288-4616
withers4@comcast.net
bestilldisplays.com